

OPENSTREETWHAT?

MAPPING THE WORLD WITH OPEN DATA

RAFA GUTIERREZ & JUSTIN MILLER

MAPBOX

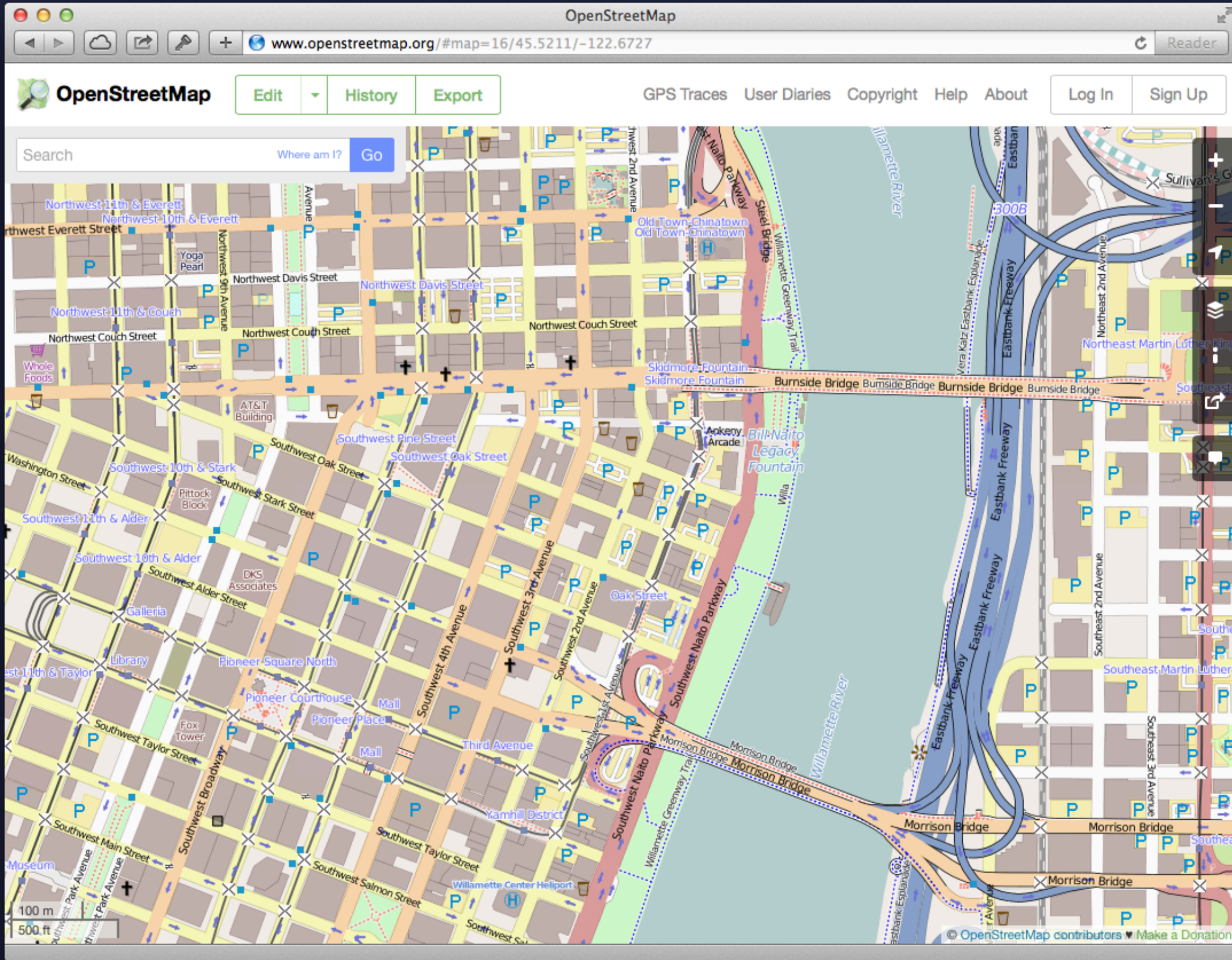
INTRODUCTIONS

OVERVIEW

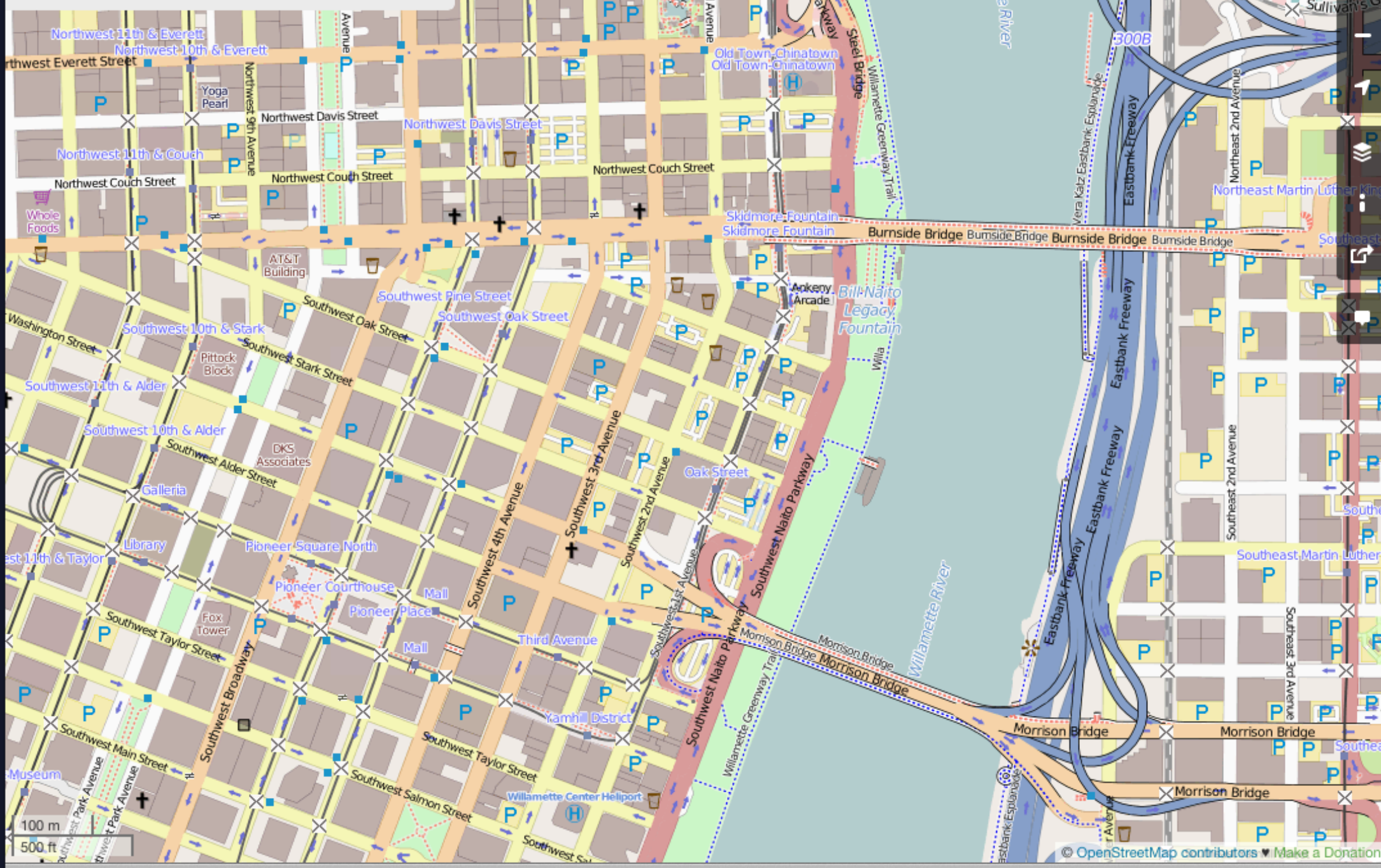
- ▶ **What is OSM?**
- ▶ **Sign up & start editing!**
 - ▶ **Data ins & outs**
- ▶ **Making use of the data**

OSM OVERVIEW

- ▶ **Founded in 2004**
- ▶ **It's like Wikipedia for maps**
- ▶ **Over 1M registered contributors**
- ▶ **Over 30K monthly active users**
- ▶ **Not just a map, but also the data**



Search Where am I? Go



100 m 500 ft

SIGNUP!


@OPENSTREETMAP.ORG

OpenStreetMap | Sign Up

https://www.openstreetmap.org/user/new

OpenStreetMap Edit History Export GPS Traces User Diaries Copyright Help About Log In Sign Up

Sign Up



Email Address:

Confirm Email Address:


Not displayed publicly (see [privacy policy](#))

Display Name:

Your publicly displayed username. You can change this later in the preferences.

Password:

Confirm Password:

Alternatively, use  OpenID to login

Free and editable
Unlike other maps, OpenStreetMap is completely created by people like you, and it's free for anyone to fix, update, download and use.

Sign up to get started contributing. We'll send an email to confirm your account.

DATA COMES FROM:

- ▶ Individual editors
- ▶ "Local knowledge"
- ▶ Some automated bots
- ▶ Sprints and edit-a-thons

DATA IS USED BY:

- ▶ **Individuals**
- ▶ **Governments**
- ▶ **Businesses (Foursquare, Craigslist, Flickr)**

**DATA IS STORED:
OPENSTREETMAP.ORG/WIKI/SERVERS**

DATA IS LICENSED:

- ▶ **ODbL (Open Data Commons Open Database License)**
 - ▶ **Free to copy, distribute, transmit, and adapt**
 - ▶ **© OpenStreetMap Contributors**
- ▶ **If you alter or build upon, release result under ODbL**

**DATA COMES OUT:
OPENSTREETMAP.ORG/WIKI/PLANET.OSM**

PLANET OSM

- ▶ PBF & XML
- ▶ XML is 400GB (29GB compressed)
 - ▶ Weekly update dumps

EXTRACTS

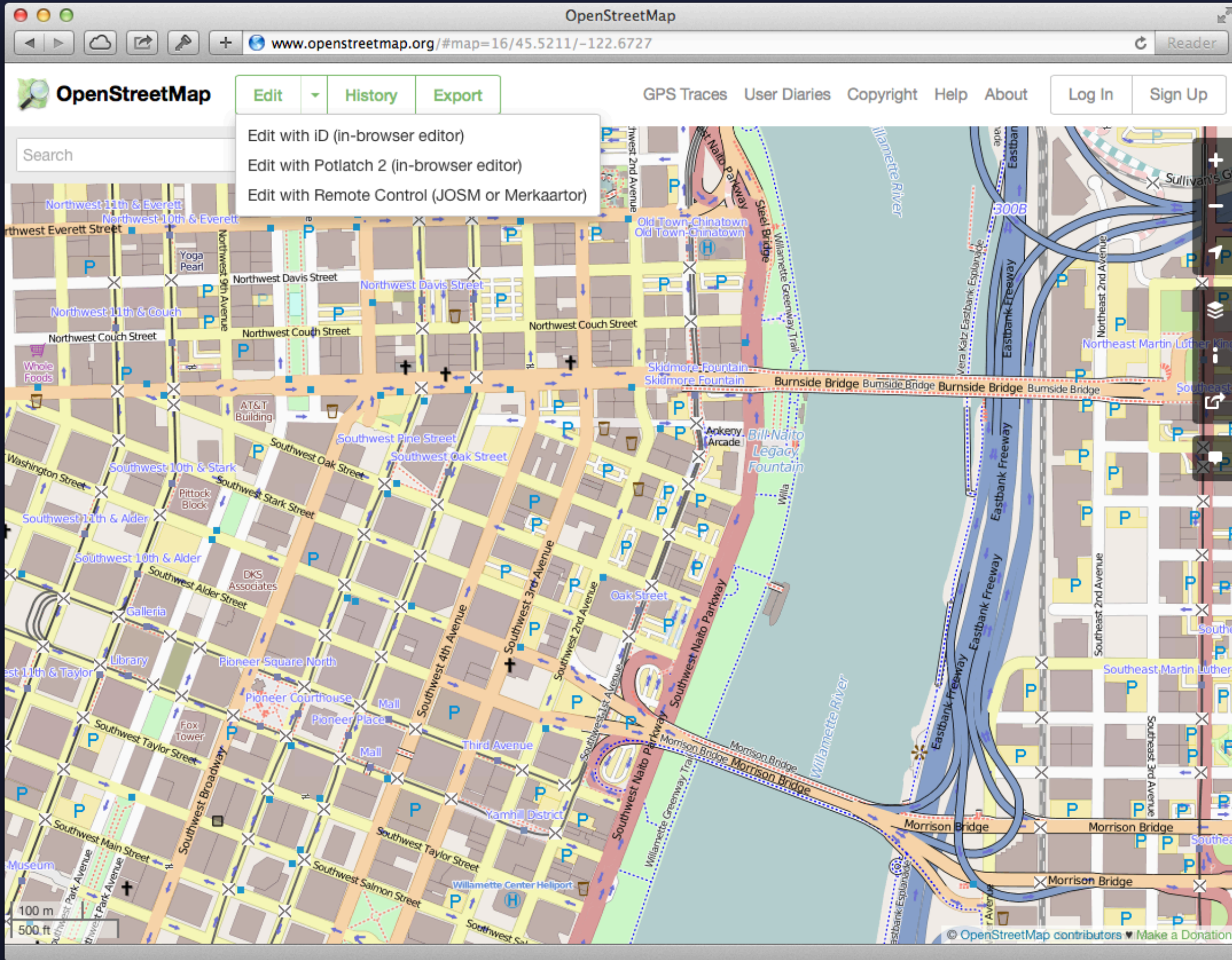
- ▶ **Regional (e.g. Europe, US/CAN)**
- ▶ **Most countries & individual cities**
 - ▶ **mapzen.com/metro-extracts**
 - ▶ **metro.teczno.com**
- ▶ **Available in various formats including GeoJSON**

OK, WHERE DO I EDIT?

ON THE WEB

RIGHT FROM [OPENSTREETMAP.ORG](https://openstreetmap.org)

USING THE ID EDITOR



Search

- Edit with ID (in-browser editor)
- Edit with Potlatch 2 (in-browser editor)
- Edit with Remote Control (JOSM or Merkaartor)

A detailed map of downtown Portland, Oregon, showing a grid of streets, the Willamette River, and major freeways like the Eastbank Freeway and Morrison Bridge. The map includes various landmarks such as the Pioneer Courthouse, AT&T Building, and several bridges. A scale bar in the bottom left corner shows 100 meters and 500 feet. The map is overlaid with a semi-transparent menu for editing the map data.

OpenStreetMap

https://www.openstreetmap.org/edit#map=16/45.5224/-122.6785

OpenStreetMap Edit History Export

GPS Traces User Diaries Copyright Help About incanus

Edit feature

Tertiary Road

Name
Southwest Stark Street

One Way
 Yes

Speed Limit
40, 50, 60... mph

Structure

- Bridge
- Tunnel
- Embankment
- Cutting
- Ford

Access

General	yes
Foot	yes

[View on openstreetmap.org](#)

Point Line Area

bing

Edits by Werewombat, Pajar Davies, Grant Humphries, and 95 others 1.4.0

JOSM

A screenshot of the JOSM desktop application interface. The background shows a map with various street names like 'Karl-Marx-Platz' and 'Rucker Str'. Overlaid on the map are several UI panels: a 'Filter active' panel at the top center, a 'Layers' panel on the top right showing 'Data Layer 1' and 'Pins Cat', a 'Search' panel on the right, and a 'Map Paint Styles' panel at the bottom right. The 'Map Paint Styles' panel lists styles like 'Maxspeed' and 'Parking lanes'. The overall interface is in a dark theme.

JAVA-BASED DESKTOP EDITING

MOBILE

- ▶ iOS: Pushpin
- ▶ pushpinosm.org
- ▶ Android: Vespucci
- ▶ code.google.com/p/osmeditor4android

**NODES, WAYS,
AND RELATIONSHIPS**

TAGGING

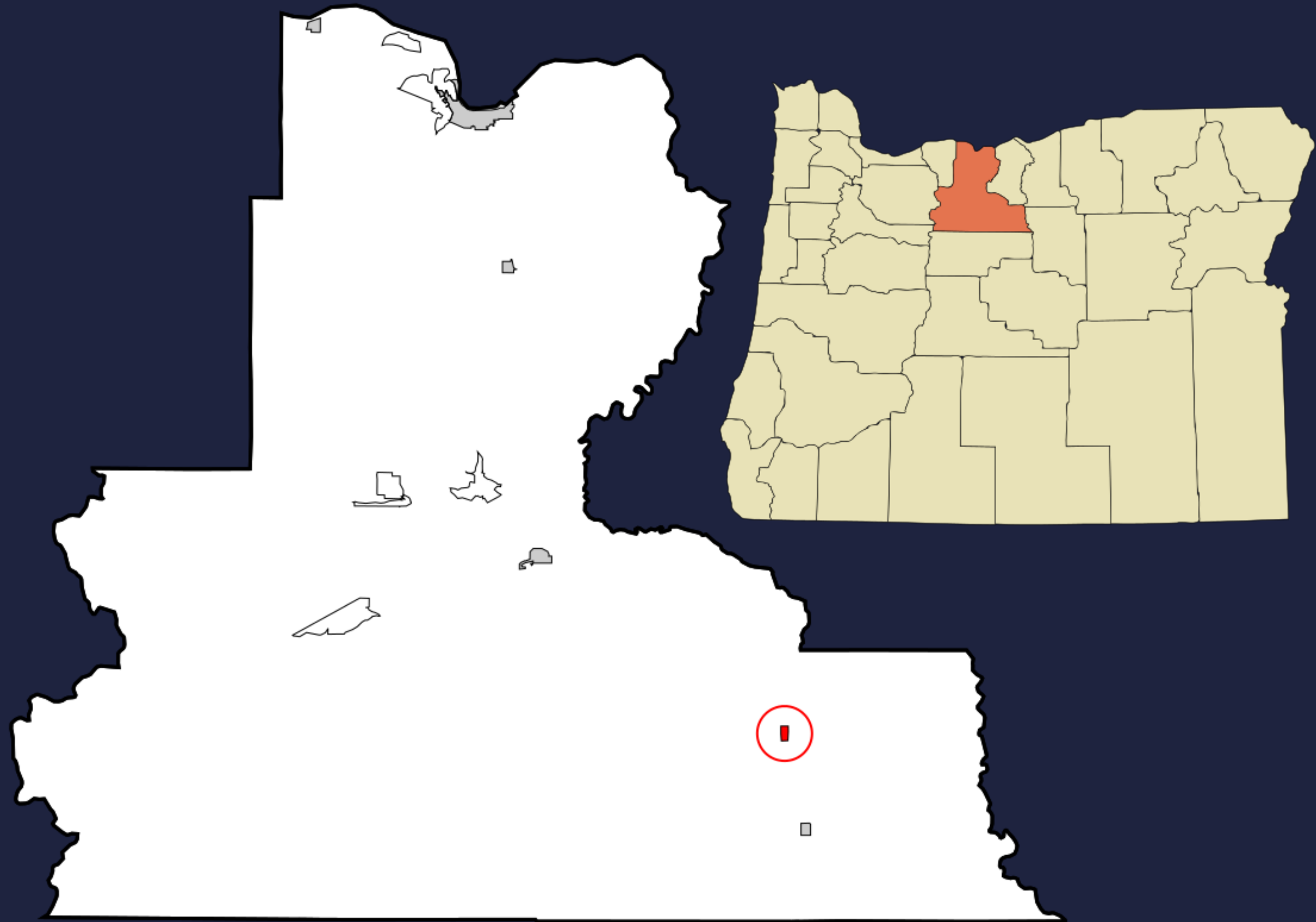
TAXONOMY = AWESOME

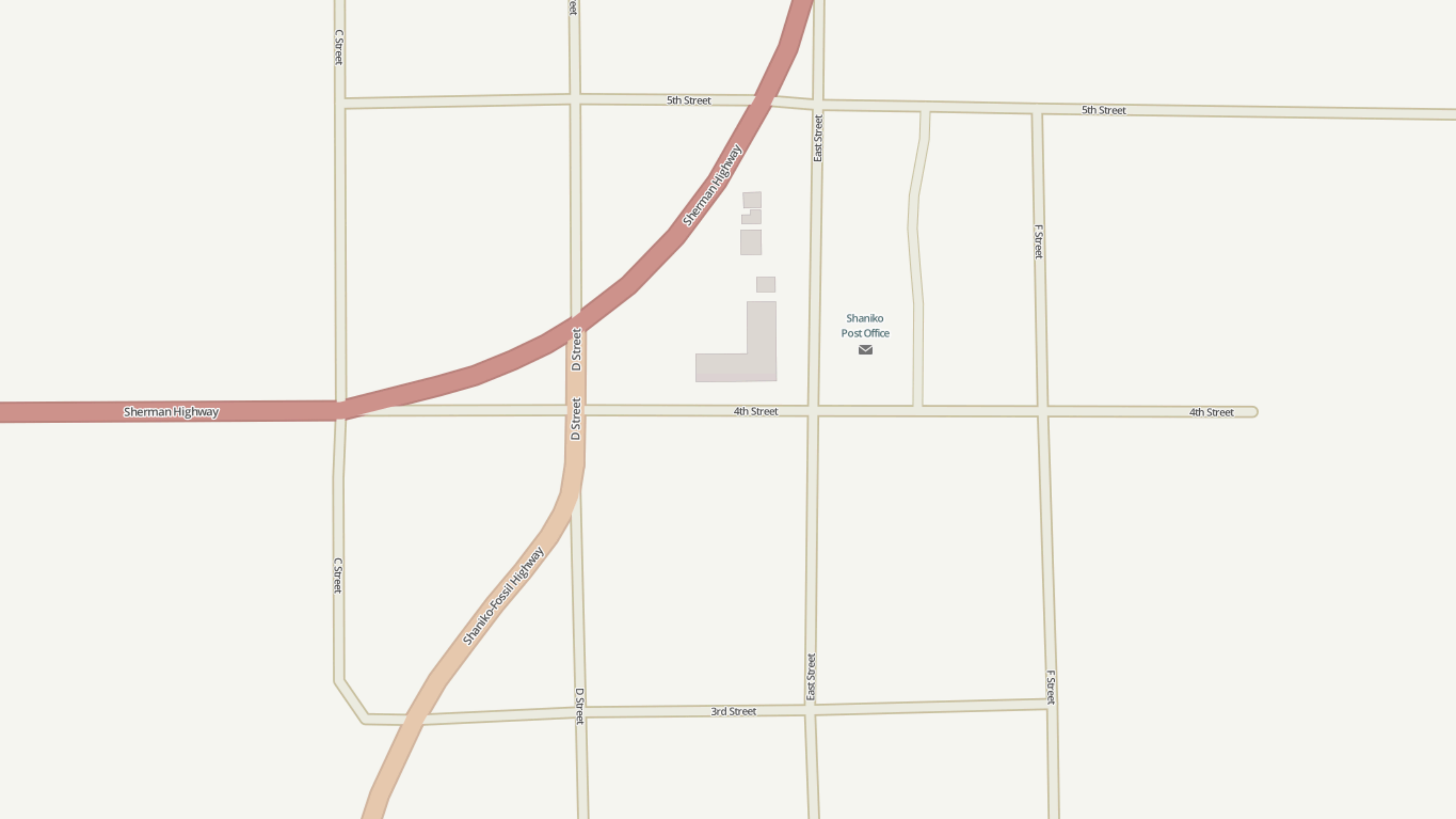
NOTES

[OPENSTREETMAP.ORG/WIKI/BEGINNERS%27_GUIDE](https://openstreetmap.org/wiki/Beginners%27_guide)

SHANIKO, OREGON







C Street

Street

5th Street

Sherman Highway

East Street

5th Street

F Street

Shaniko
Post Office



Sherman Highway

D Street

4th Street

4th Street

D Street

Shaniko-Fossil Highway

C Street

East Street

F Street

3rd Street

D Street



C Street

Sherman Highway

D Street

5th Street

4th Street

Shaniko Post Office

Shaniko-Fossil Highway

D Street

3rd Street

East Street

F Street

EDIT BREAK!

AND WE'RE BACK!

DOING STUFF WITH OSM DATA

- ▶ **Get data**
- ▶ **Use data**
- ▶ **Attribute data**

MAPBOX.JS

BASED ON LEAFLET

OVERPASS-TURBO.EU

- ▶ Query live OSM data
- ▶ Get it out as GeoJSON
- ▶ Other formats as well as an API

JS OVERLAY EXAMPLE

[GITHUB.COM/MAPBOX/OSB14](https://github.com/mapbox/osb14)

CODING BREAK!

WRAP-UP

OSM NEXT ACTIONS

- ▶ **Keep improving OSM with your edits**
- ▶ **Look for edit-a-thons & easy ways to contribute**
- ▶ **Help with bigger efforts like PDX building import**

CODING NEXT ACTIONS

- ▶ **TriMet hackathon tonight!**
 - ▶ **MaptimePDX**
- ▶ **mapbox.com/foundations/osm-and-mapbox**
- ▶ **Signup for Mapbox using MAPBOXOSB14**

THANKS FOR COMING!

@INCANUS77 & @GEOGRAFA